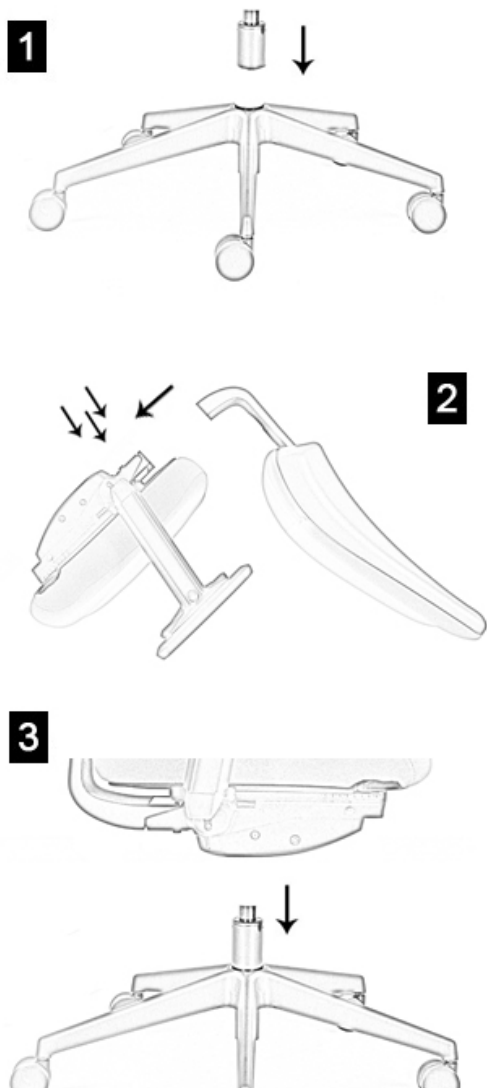


How to assemble your Responsiv



Key Information



2 Person Assembly Recommended.



Three Bolt Assembly.



1 x Allen Key (supplied) required for assembly.



This product can be assembled within 10 minutes.



This product is rated as EASY to assemble.



Check Chair Structure Every 3 Months for Max Stability.



Please note that this product will be heavy when assembled. Please ensure that if you need to lift or carry this product that you do not do this by yourself.

1 Locate the Gas Lift

Remove the 5 star base from the box and place it down on the floor. Remove the gas lift from the box and firmly push it into the hole located in the centre of the 5 star base. Please ensure that the gas lift is located securely before continuing to step 2.

2 Connect back to seat

Remove the seat assembly from the box and rest upside down on a hard surface. Using the bolts and allen key provided, secure the backrest to seat assembly by bolting through the 3 locating holes in underseat mechanism into threaded holes in metal black bar.

3 Connect chair assembly to base

Turn the completed chair top section back over and carefully locate the top of the gas lift into the circular hole in the centre of the under-seat mechanism. Your product is now assembled. Please ensure that all bolts are tight before using your product.

How to use your Responsiv Mechanism



Synchronised Body Responsiv Mechanism

Simplistic controls located all on one side make this mechanism really easy to use and ultra ergonomic. This quick and easy mechanism has been developed to put the user in full control of their chair, enabling them to work in free flow mode or lock the chair into a position that is comfortable for them.

1) Adjustable Lumbar Panel

From a seated position, raise or lower the Lumbar Panel to optimise comfort and support for your lower back.

2) Seat Slide

Push and hold the button to alter the seat depth by sliding your body forward. When you are happy with the seat location release the button to lock the chair into the desired position.

3) Back and Seat Height Adjustment

Raise the lever and adjust the height of the seat to maximise comfort. Release lever when your seat is in your preferred position.

4) Back and Seat Angle Adjustment

Push the button to set the chair in any one of the 5 locking positions, or leave the button open to operate in free float mode.