



HEPRO WORK CHAIRS

# HEPRO WORK CHAIRS

## INDEX

Hepro G2 Aktiv and Hepro G1 Aktiv	Page 3	Hepro S1, S6, S9 and S10	Page 8
Hepro G2 Tilto and Hepro E2 Tilto	Page 4	Hepro E1 Kilo	Page 9
Hepro G2 Coxit and Hepro E2 Coxit	Page 5	Standard accessories to Hepro work chairs	Page 10 - 11
Hepro E1 Standard and Hepro E2 Standard	Page 6		
Hepro E2 Synkron	Page 7		

## HEPRO - WORK CHAIRS

Hepro work chairs are designed to help people with disabilities that make it difficult for them to execute an activity in an upright position, and at the same time have problem with movement during the activity. The chairs have big levers with clear symbols and can be easily adjusted to fit ergonomically while simultaneously taking into account the body's movements.

We are competitive on price and quality in a market that is characterized by strong international competition.

Services are performed in the factory in the north of Norway, but also sales personnel are trained in technical maintenance.

When used in accordance with the Operating Instructions and the Service Manual, Hepro provides a two year warranty against defects in material and workmanship.

## GENERAL INFORMATION

The central unit for work chairs and Coxit-chairs are available in two models, manually seat lift with gas spring and electric seat lift with actuator.

Seat cushions and backrest cushions are «snapped» fastened and can be removed without tools with the exception of the seat cushion "Aktiv" where the complete seat is removed from the sliders.

Regulations: Seat height, backrest height, angle adjustments of backrest and seat, adjust tilt function to body weight (Tilto and Synkron), armrest height, armrest width, armrest length and the position of brake handle. Can be done without need of tools.

- The fabric can be washed up to 60°C.
- The standard fabric and color are Solo 181 grey.
- Alternative colors/fabric can be delivered on request.

### Electro with seat rotation:

Rotates 180° with locking straight forward and 90° to each side.

### Gasso with seat rotation:

Rotates 360° with locking straight forward, straight backward and 90° to each side.

### When ordering accessories or spare parts:

Always state the serial number of the product.

## MATERIALS AND COMPONENTS

Wheel base - model 2004	powder coated aluminium
Seat-/back shell	mould shaped plastic
Cushion	mould shaped PUR-foam
Fabric	furniture fabric 100% Trevira CS
Front wheel	casters of plastic with ball bearing built in wheels
Back wheel	casters of plastic with locking function and ball bearing built in wheels. Operating angle brake handle: 30°.

# HEPRO G2 AKTIV & HEPRO G1 AKTIV

Work chairs with manual seat lift and floating tilt.



Hepro G2 Aktiv

3

Hepro G2 Aktiv has individual variable back angle adjustment, "floating tilt-function" and rotation with locking in four positions. The seat and backrest can be tilted simultaneously and continuously adjusted. With the lever in open position, the chair will have "floating tilt". This is lockable infinitely in desired position.

The armrest is adjustable and can be pushed forward or back, height-regulated or folded back.

Hepro G1 Aktiv has the same possibilities as Hepro G2 Aktiv except rotation.

## TYPE

HEPRO G2 Aktiv  
Hepro G1 Aktiv

## ITEM.NO

30031  
30030

G1 = Gas lift Without rotation  
G2 = Gas lift With rotation

## Measure and dimensions: Hepro G2 Aktiv og G1 Aktiv

### Standard versions:

Total width (incl. brake handle)	63	cm
Seat size (WxD)	43 x 43	cm
Seat depth	42 - 49	cm
Seat height - Reg. 15 cm	43 - 58	cm
Seat height (adj. seatlift)	12	cm
Seat angle regulation	-7 - +6°	
Backrest (W x H)	37 x 43	cm
Backrest (height regulation)	+ 10	cm
Backrest (angle regulation)	23°	
Armrest (inside width-regulation)	42 - 52	cm
Armrest (height regulation)	18 - 26	cm
User weight (max)	150	kg
Weight (standard chair complete)	22	kg

# HEPRO G2 TILTO & HEPRO E2 TILTO

Work chairs with manual or electric seat lift, manual seat tilt.



Hepro G2 Tilto



Hepro E2 Tilto

The angle between the seat and the backrest can easily be adjusted and blocked. The seat unit can be tilted without changing the basic setting. This means that the load on the body can be changed without changing the angle between the backrest and seat. The chair has big wheels and good legroom. This makes it easy to move, but is stable when the brake is activated.

The chair is delivered with the Extra High backrest (EHR) and neck support as standard. The back has built-in inflatable lumbar support which is operated by hand pump. A lower back (HR) is an accessory.

The neck support can be raised or lowered and at the same time adjusted forward or backward by rotating it around the cushion fixing.

The armrest is adjustable and can be pushed forward or back, height-regulated or folded back.

TYPE	ITEM NO.
Hepro G2 Tilto	30003
Hepro E2 Tilto	30054

E2 = Elektric lift with rotation  
G2 = Gas lift With rotation

## Measure and dimensions

Standard versions:

	Hepro G2 Tilto	Hepro E2 Tilto
Total width (incl. brake handle)	63 cm	63 cm
Seat size (WxD)	47 x 47 cm	47 x 47 cm
Seat depth	44 - 54 cm	44 - 54 cm
Seat height - Reg. 15 cm	47 - 62 cm	50 - 65 cm
Seat height (adj. seatlift)	12 cm	12 cm
Seat angle regulation	-13° - + 7°	-13° - + 7°
Backrest (WxH)	44 x 63 cm	44 x 63 cm
Backrest (height regulation)	+ 10 cm	+ 10 cm
Backrest (angle regulation)	0 - +28°	0 - +28°
Armrest (inside width regulation)	42 - 52 cm	42 - 52 cm
Armrest (height regulation)	19 - 27 cm	19 - 27 cm
User weight (max)	150 kg	150 kg
Weight (standard chair complete)	35 kg	41 kg



# HEPRO G2 COXIT OG HEPRO E2 COXIT

Work chairs with coxit-seat



Hepro G2 Coxit



Hepro E2 Coxit

The Coxit seats have seat flaps, which can be regulated individually. The chair gives the opportunity for optimal setting for persons with problems with their hips and knees.

The Coxit flaps can be regulated and locked with handles under the flaps in the front of the seat. The models do not have a foot ring as a standard.

The armrest is adjustable and can be pushed forward or back, height-regulated or folded back.

## TYPE

Hepro G2 Coxit  
Hepro E2 Coxit

## ITEM NO.

30007  
30058

E2 = Elektric lift with rotation  
G2 = Gas lift With rotation

## Measure and dimensions

## Hepro G2 Coxit Hepro E2 Coxit

Standard versions:

Total width (incl. brake handle)	63 cm	63 cm
Seat size (WxD)	48 x 46 cm	48 x 46 cm
Seat depth	46 cm	46 cm
Seat height – Reg. 15 cm	43 - 58 cm	46 - 61 cm
Seat height (adj. seatlift)	9 cm	6 cm
Seat angle regulation	-8° - +3°	-8° - +3°
Backrest (WxH)	40 x 36 cm	40 x 36 cm
Backrest (height regulation)	+8 cm	+8 cm
Backrest (angle regulation)	+5° - -48°	+5° - -48°
Armrest (inside width regulation)	42 - 52 cm	42 - 52 cm
Armrest (height regulation)	18 - 26 cm	18 - 26 cm
User weight (max)	150 kg	150 kg
Weight (standard chair complete)	23 kg	29 kg

# HEPRO E1 STANDARD & HEPRO E2 STANDARD

Work chairs with electric seat lift



Hepro E2 Standard

6

The angle between the seat and the backrest can easily be adjusted and blocked.

The chair has big wheels and good legroom. This makes it easy to move, but is stable when the brake is activated.

The armrest is adjustable and can be pushed forward or back, height-regulated or folded back.

TYPE	ITEM NO.
Hepro E1 Standard	30051
Hepro E2 Standard	30052

E1 =Elektric lift without rotation  
E2 = Elektric lift with rotation

## Measure and dimensions Hepro E1 Std. og E2 Std.

Standard versions:

Total width (incl. brake handle)	63	cm
Seat size (WxD)	46 x 42	cm
Seat depth	42	cm
Seat height – Reg. 15 cm	45 - 60	cm
Seat height (adj. seatlift)	7	cm
Seat angle regulation	0° - +7°	
Backrest (WxH)	40 x 36	cm
Backrest(height regulation)	+8	cm
Backrest (angle regulation)	+5 - -48°	
Armrest (inside width regulation)	42 - 52	cm
Armrest (height regulation)	18 - 26	cm
User weight (max)	150	kg
Weight (standard chair complete)	28	kg

# HEPRO E2 SYNKRON

Work chairs with synchronized tilt of complete seat unit, electric seat lift.



Hepro E2 Synkron

The angle between the seat and the backrest can easily be adjusted but not blocked.

When the seat unit tilts the angle between seat and backrest changes synchronously with the tilt angle. This allows the back to support the body during the tilt movement.

The chair has big wheels and good legroom. This makes it easy to move, but is stable when the brake is activated.

The chair is delivered with the Extra High backrest (EHR) and neck support as standard.

The armrest is adjustable and can be pushed forward or back, height-regulated or folded back.

## TYPE

Hepro E2 Synkron

## ITEM NO.

30056

E2 = Elektric lift with rotation

## Measure and dimensions

## Hepro E2 Synkron

Standard version:

Total width (incl. brake handle)	63	cm
Seat size (WxD)	47 x 47	cm
Seat depth	41 - 57	cm
Seat height – Reg. 15 cm	47 - 62	cm
Seat height (adj. seatlift)	12	cm
Seat angle regulation	-9° - +5°	
Backrest (WxH)	44 x 63	cm
Backrest(height regulation)	+9	cm
Backrest (angle regulation)	0° - -21°	
Armrest (inside width regulation)	42 - 52	cm
Armrest (height regulation)	18 - 26	cm
User weight (max)	150	kg
Weight (standard chair complete)	35	kg

# HEPRO S1, S6, S9 & S10

Standing support chair with manual regulation.



Hepro S9  
- with chest support  
and wheels without  
brake.



Hepro S1  
- with free rotation  
and slide knobs.



Hepro S6  
without rotation  
and load braking  
wheels.



Hepro S10  
- with free  
rotation and load  
braking wheels.

8

The standing support chairs have individually regulation of the seat height, seat angle and backrest angle.

These chair models give good support and excellent relief in your working situation when standing up.

All models can be changed and adjusted for different needs by using a wide variety of accessories.

The standing support chairs are delivered with either sliding knobs, casters with load operated brake or casters without brake.

TYPE	ITEM NO.
Hepro S1	30100
Hepro S6	30104
Hepro S9	30107
Hepro S10	30108

Gas spring	24 cm	18 cm	13 cm	9 cm
Hepro S1	cm 57-81	*51-69	40-53	34-43
Hepro S6	cm 60-84	*54-72	43-56	37-46
Hepro S9	cm 60-84	*54-72	43-56	37-46
Hepro S10	cm 60-84	*54-72	43-56	37-46

\* Gas spring delivered as standard.

Measure and dimensions	S1	S6	S9	S10
Standard versions:				
Total width (incl. brake handle)	63 cm	63 cm	63 cm	63 cm
Seat size (WxD)	41x38cm	41x38cm	35x32cm	41x38cm
Seat height	51 - 69cm	54 - 72cm	54 - 72cm	54 - 72cm
Seat angle regulation	-14° - +18°	-14° - +18°	-8° - +16°	-14° - +18°
Backrest (WxH)	38 x 23cm	38 x 23cm	22 x 26cm	38 x 23cm
Backrest (height regulation)	+10cm	+10cm	+10cm	+10cm
Backrest (angle regulation)	+7° - -59°	+7° - -59°	+7° - -59°	+7° - -59°
User weight (max)	120kg	120kg	120kg	120kg
Weight (std. chair complete)	11kg	11kg	11kg	11kg



# HEPRO E1 KILO

Work chairs with electric seat lift for heavy users.



Hepro E1 Kilo

Hepro E1 Kilo is a chair intended for heavy persons/users. The chair has electric seat lift with 10 cm height lift.

The chair is designed for users up to 230kg.  
Big wheels with flat track make the chair run easily.

A control switch for seat height regulation and a lever for back angle regulation is installed on the right side of the chair.

The armrest can be height regulated or folded back.

TYPE	ART.NR	NAV.NR
Hepro E1 Kilo	30064	019260

E1 = Elektric lift without rotation

Measure and dimensions	Hepro E1 Kilo	
Standard version:		
Total width (incl. brake -handle)	73	cm
Seat size (WxD)	55 x 50	cm
Seat depth	46 - 60	cm
Seat height	51 - 61	cm
Backrest (WxH)	40 x 36	cm
Backrest (height regulation)	+8	cm
Backrest (angle regulation)	+5° - - 48°	
Armrest (inside width regulation)	46 - 63	cm
Armrest (height regulation)	17 - 27	cm
User weight (max)	230	kg
Weight (standard chair complete)	39	kg

## ACCESSORIES TO WORK CHAIRS, STANDING SUPPORT CHAIRS AND COXIT CHAIRS

### ITEM NO. BENEVNELSE

30881	¼-footring 2004 complete
31801	Abduction block standard
31812	Adapter Aktiv for footsupport telescope
30802	Amputation foot lean. L (indicate chair model)
30798	Amputation foot lean. R (indicate chair model)
31596	Armrest Comfort 2004 H, x-long (+6cm)
31597	Armrest Comfort 2004 V, x-long (+6cm)
31593	Armrest Comfort 2004 H.
31594	Armrest Comfort 2004 V.
31142	Armrest Fixed 2004 H, with Hepro-top pad
31143	Armrest Fixed 2004 V, with Hepro-top pad
31136	Armrest Moveon H, fixed, with RHF-top pad
31139	Armrest Moveon V, fixed, with RHF-top pad
30806	Armrest adapter 2004, lower armrest 6,5cm (pair L-R)
31261	Foot support length compensation. R-side, incl. footplate
31206	Foot support length compensation. L-side, incl. footplate
31258	Foot support telescope 32-56cm divided footplate (to standard seat mechanism)
31585	Foot support telescope 32-56cm divided footplate (to standard seat mechanism)
31265	Foot support telescope 32-56cm. Whole footplate
31586	Foot support telescope 32-56 whole footplate (to Tilto seat mechanism)
30616	Control handles w/rotation. Left side
30615	Control handles without rotation. Left side
31595	Lumbar support integrated in the backrest (indicate backrest-type)
31810	Lumbar support with regulation
31681	Transparency table, fold away W60xD40
31674	Electric brake, wheel base 2004
30882	Footplate, angle adjustable, for ¼-footring 2004
31489	Footring, Ø45cm, for standing chair
31497	Gas spring, free rotation, 13 cm for standing support chair
31491	Gas spring, free rotation, 24 cm for standing support chair
31498	Gas spring, free rotation, 9 cm for standing support chair
31487	Sliding knobs w/metal bottom to the standing chair, piece
31151	Slide rail, seat mechanism 3A, complete.
31486	Wheel Ø50, standing chair, brakes without load, piece
31484	Wheel Ø50, dbl, w/load brake, piece
31481	Wheel Ø50, dbl, without brake (for 5-armed wheel base), piece
31488	Wheel Ø50, dbl without brake, anti static (for 5-armed wheel base), piece
31684	Wheel base S2 complete w/brake lever to the standing support chair
31807	Wheel base, 5-armed, w/o casters
30744	Headrest w/regulation, backrest Synkron HR and EHR, black fabric
31897	Headrest w/regulation, backrest Tilto HR and EHR
31288	Escort handle, type 2004, oval fixing
31918	Incontinence cover seat Aktiv, standard, fabric
31919	Incontinence cover seat Aktiv, large, fabric
31645	Incontinence cover seat Kilo, fabric

### ITEM NO. BENEVNELSE

31071	Incontinence cover seat Maxi, fabric
31107	Incontinence cover seat Mini, fabric
31066	Incontinence cover seat standard, fabric
31117	Incontinence cover seat Synkron, fabric
31228	Lumbar support, inflatable, 16x30cm, black fabric
31227	Lumbar support, inflatable, 20x40cm, black fabric
31275	Leg support for mounting on foot support telescopic L/R
31426	Lift unit E200 Standard
31686	Lift unit E200 Tilto
31920	Lift unit G200 Aktiv
31306	Lift unit G200 Standard
31811	Lift unit G200 Tilto
31804	Backrest Tilto EHR (Logic 400), B45xH63
31806	Backrest Aktiv small, W37xH29
31900	Backrest Aktiv large, W37xH43
31221	Backrest HR to 3A-seat mechanism, W43xH43
31218	Backrest Mini, W38xH23
31208	Backrest Standard, W36xH29
31225	Backrest Synkron EHR, W44xH63
31223	Backrest Synkron HR, W44xH51
31898	Backrest Tilto HR (Logic 300) W44xH45
31901	Seat Aktiv Standard complete, W44xH43
31902	Seat Aktiv large complete, W46xD46
31196	Seat Maxi, W48xD46
31201	Seat Mini, W35xD40
31327	Seat raiser, height 2,5cm, black steel
31412	Seat lower -5cm, w/actuator 10cm regulation
31230	Seat lower -5cm, w/gas spring 10cm regulation
31921	Seat cushion Aktiv Standard w/pressure relief, W44xD43
31922	Seat cushion Aktiv large w/pressure relief, W46xD46
31588	Seat cushion Maxi w/pressure relief, W48xD46
31587	Seat cushion Standard w/pressure relief, W46xD42
31808	Thigh support cushion w/fixing, right
31809	Thigh support cushion w/fixing, left
31505	Anti-static fabric for seat- and back to standing chair



ART. NR. 31227

Lumbar support for working chair and coxist chair.



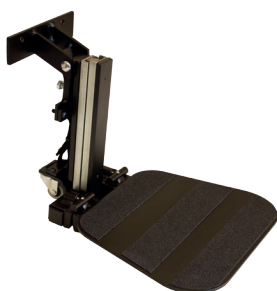
ART. NR. 31258

Divided foot support for working chair.



ART. NR. 31897

Headrest with regulation for working chair.



ART. NR. 31265

Foot support - whole plate for working chair



ART. NR. 31593

Armrest Comfort for working chair and coxist chair.



ART. NR. 30744

Headrest Moveon for working chair.



ART. NR. 31275

Leg support for working chair.



ART. NR. 31681

Table for working chair and coxist chair.



ART. NR. 31808

Thigh support cushion w/fixing for working chair and coxist chair.



ART. NR. 31489

Footring, Ø45cm for standing support chair



ART. NR. 31801

Abduction block standard, w/fixing



ART. NR. 31810

Lumbar support reg.



ART. NR. 31595

Lumbar support integrated in the backrest for working chair and coxist chair.



---

HEPRO AS  
Øvermoan 9, 8250 Rognan, Norway  
Telephone: +47 75 69 47 00  
E-mail: [marked@hepro.no](mailto:marked@hepro.no)  
[hepro.no](http://hepro.no)